

III JORNADAS DE MEDICINA INTERNA PEDIATRICA

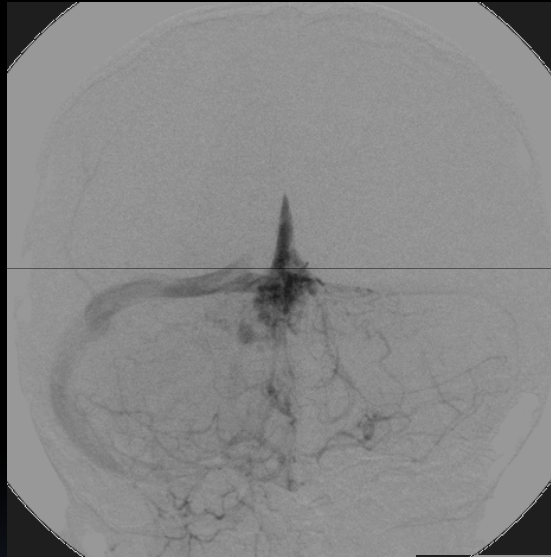
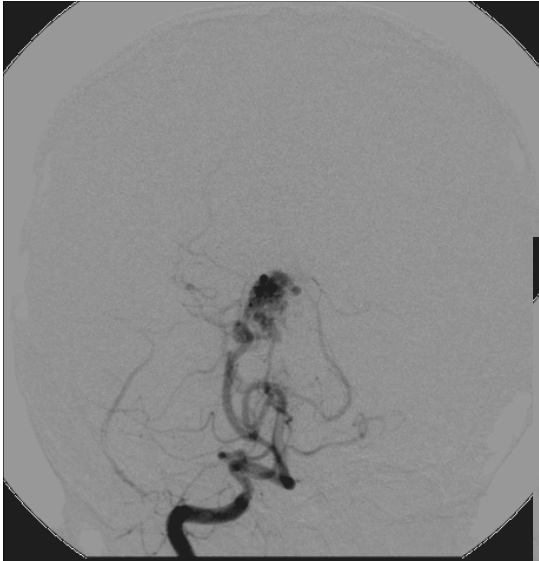
AGOSTO 2012

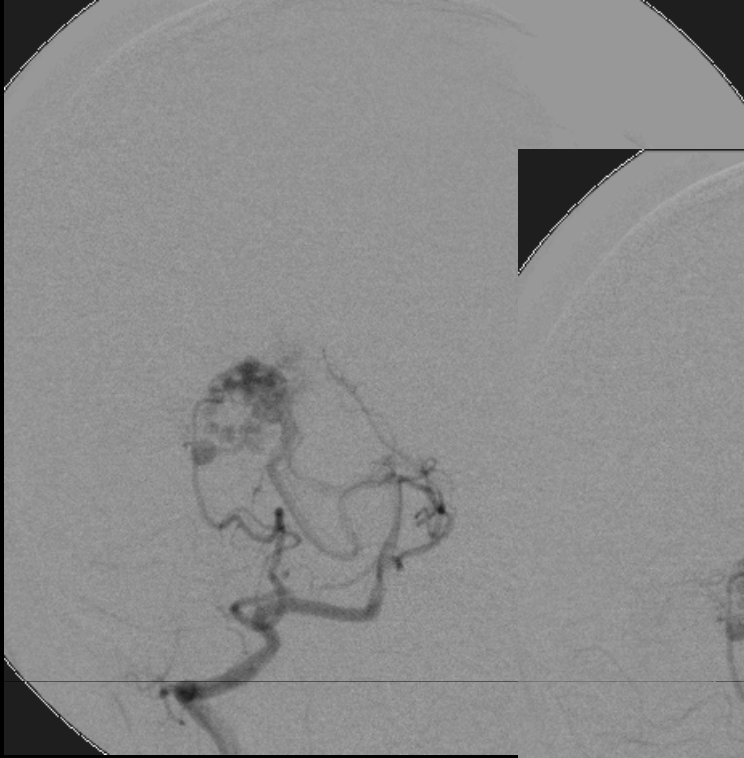
PTE DE 7 AÑOS QUE DEBUTA CON CEFALEA BRUSCA.
TAC MUESTRA HSA DE PREDOMINIO CEREBELOSO PARTE
POST DE CISTERNA AMBIENS Y SISTEMA DE GALENO.

ANGIOTAC MUESTRA MAV EN VERMIS CEREBELOSO SUP
PARAMEDIANO DERECHO.

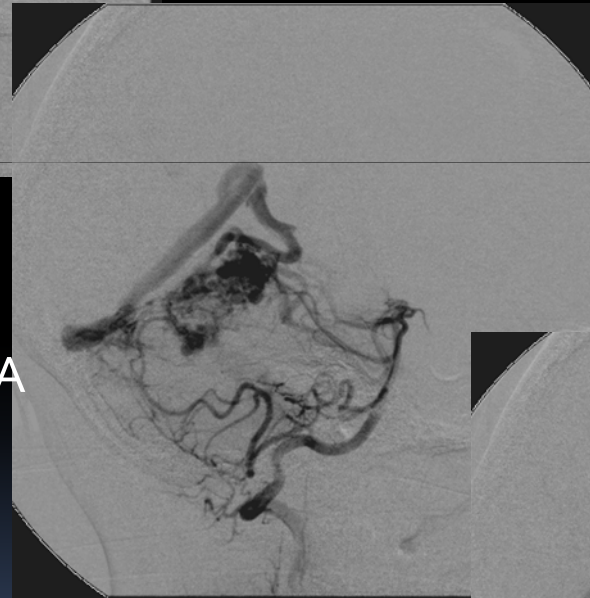
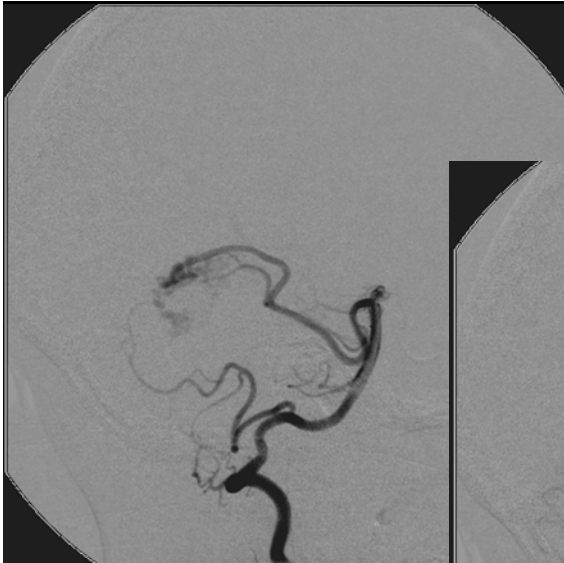
ANGIO CONFIRMA EL DIAGNOSTICO, AFERENCIA
PREDOMINANTE POS CEREBLOSA SUP DERECHA Y PICA
DERECHA EN COMPARTIMIENTO INFERIOR.

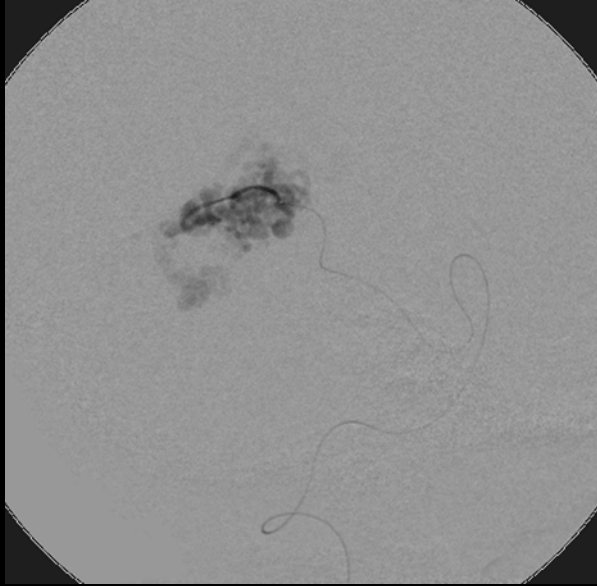
SE EMBOLIZA PREVIO A CIRUGIA. POR CEREB SUP DESDE EL
COMPARTIMIENTO INFERIOR AL SUP SE LOGRA OCLUSION
TOTAL.





MAV DEPENDIENTE DE LA ARTERIA
CEREBELOSA SUPERIOR

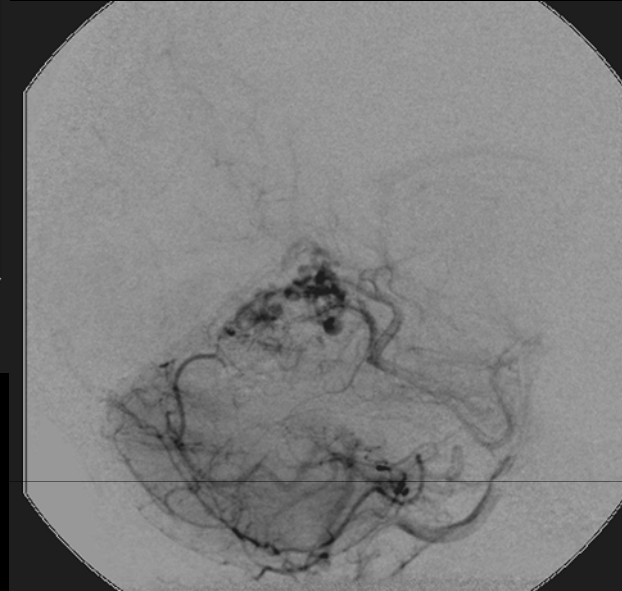




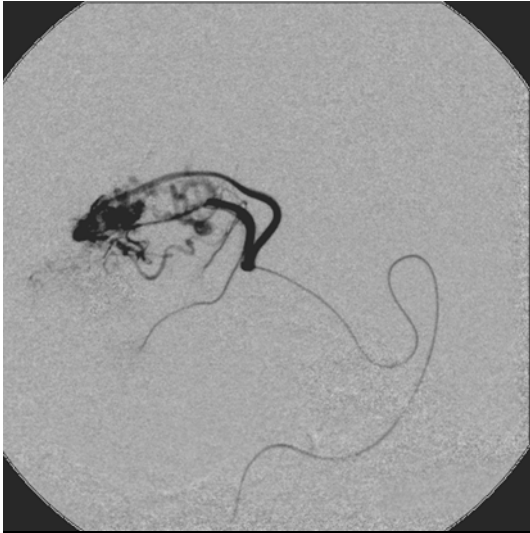
MICROCATETER PROXIMAL



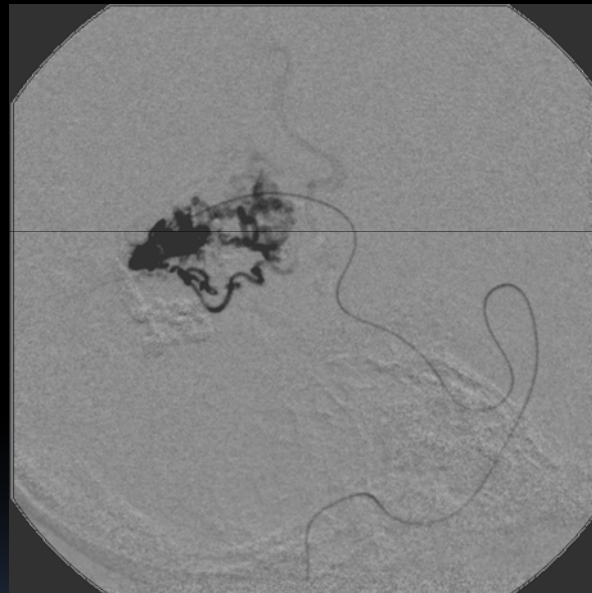
MICROCATETER DISTAL



POST-1ERA EMBOLIZACIÓN



MICRO PROXIMAL



MICRO DISTAL LLENANDO LA MAV DE DISTAL A PROXIMAL

