

The background is a dark blue, futuristic digital landscape. In the foreground, there's a glowing, circular pattern of concentric lines that resembles a fingerprint or a data visualization. The background is filled with vertical lines of varying heights and widths, some with small circles at the top, creating a sense of depth and digital connectivity. The overall color palette is shades of blue, from deep navy to bright cyan.

Inmersos en un mundo de salud digital pediátrica

Dr. Roberto Dek
Telemedicina
Hospital Garraha

CHARACTERS REBOOTING MEDICINE AND HEALTH

O, 1, A, C, G, T

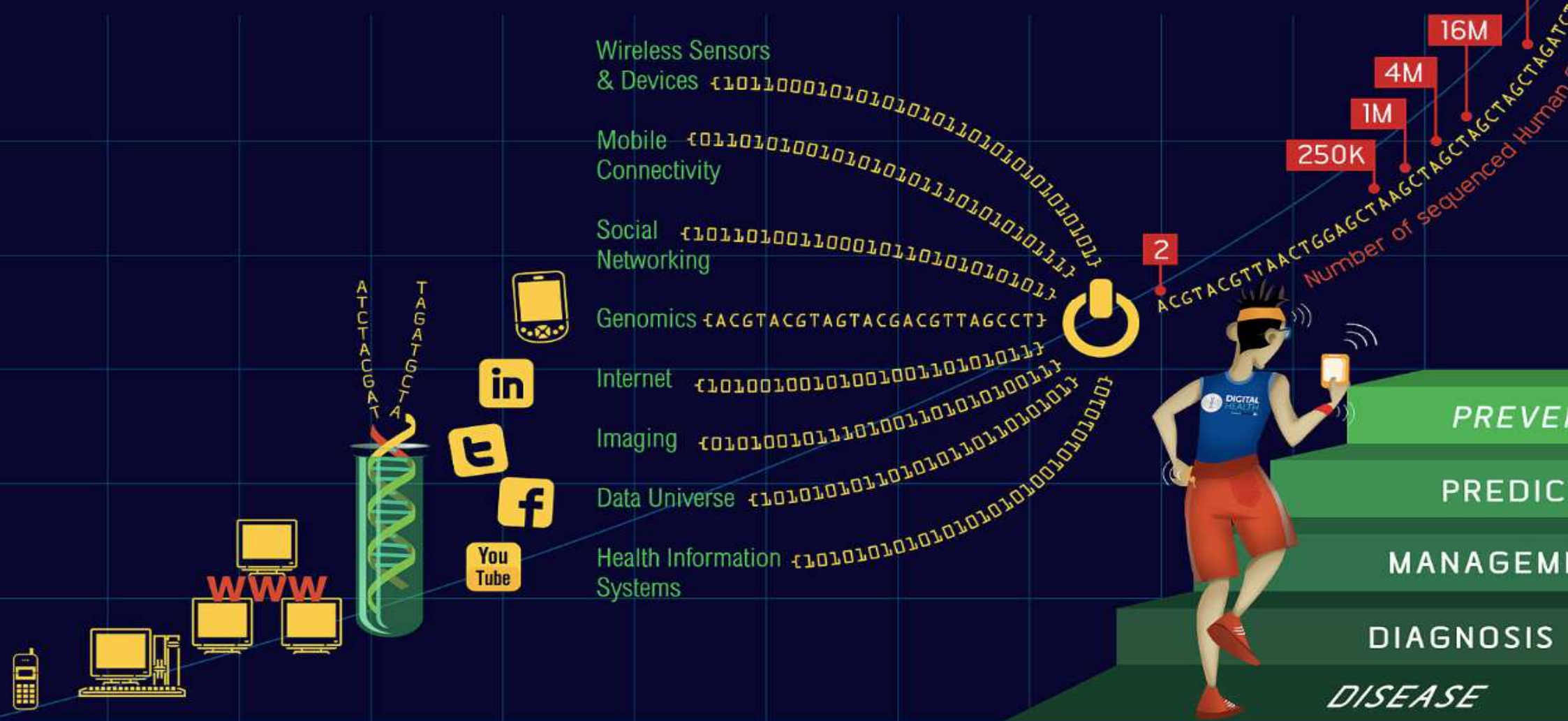
Brought to you by MI2FIT and  linkd.in/DigitalHealthGroup
www.misfitwearables.com/references

Accelerating Digital Technology

Super-Convergence

Reboot

64M



Based on the work of Dr. Eric Topol, author of "The Creative Destruction of Medicine: How the Digital Revolution Will Create Better Health Care"

1970

1980

1990

2000

2010



Accelerating Digital Technology

Super-Convergence

Reboot

Medical knowledge doubles every:¹

- 50 years in 1950
- 7 years in 1980
- 3.5 years in 2010
- 73 days by 2020



Based on the work of Dr. Eric Topol, author of "The Creative Destruction of Medicine: How the Digital Revolution Will Create Better Health Care"

970 1980 1990 2000

2010

CHARACTERS REBOOTING MEDICINE AND HEALTH

O, 1, A, C, G, T

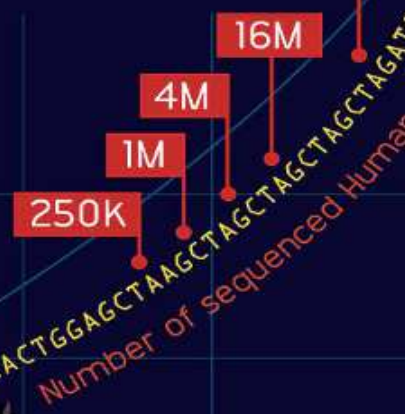
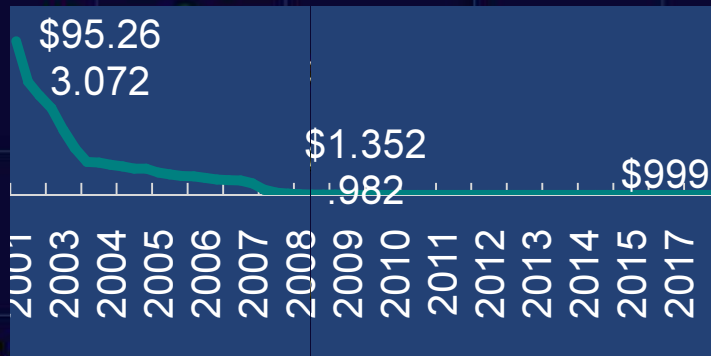
Brought to you by MI2FIT and  linkd.in/DigitalHealthGroup
www.misfitwearables.com/references

Accelerating Digital Technology

Super-Convergence

Reboot

64M



Genomics {ACGTACGTAGTACGACGTTAGCCT}

Internet {1010010010100100110101011}

Imaging {0101001011101001101010011}

Data Universe {10101010110101011010101}

Health Information Systems {10101010101010101010101}



2



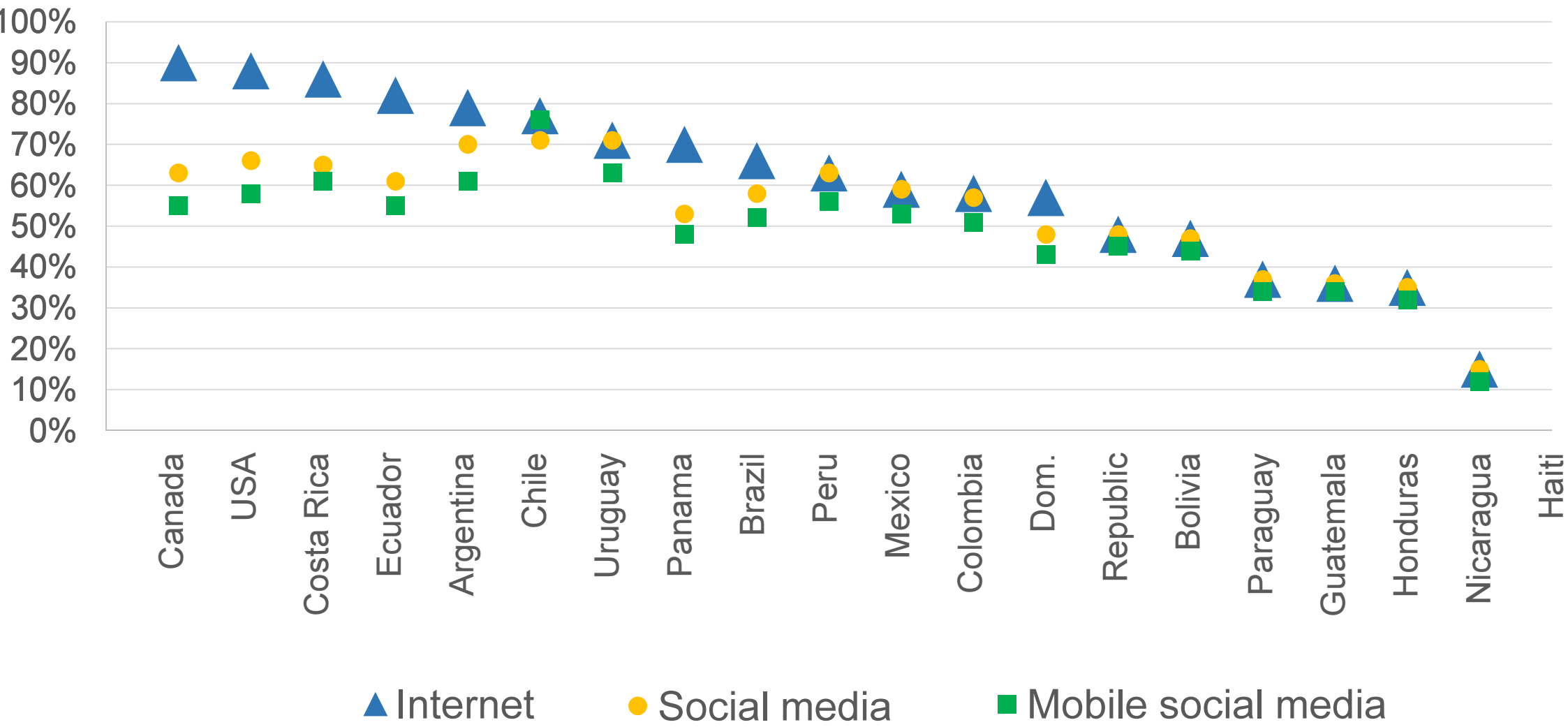
1970 1980 1990 2000

Based on the work of Dr. Eric Topol, author of "The Creative Destruction of Medicine: How the Digital Revolution Will Create Better Health Care"

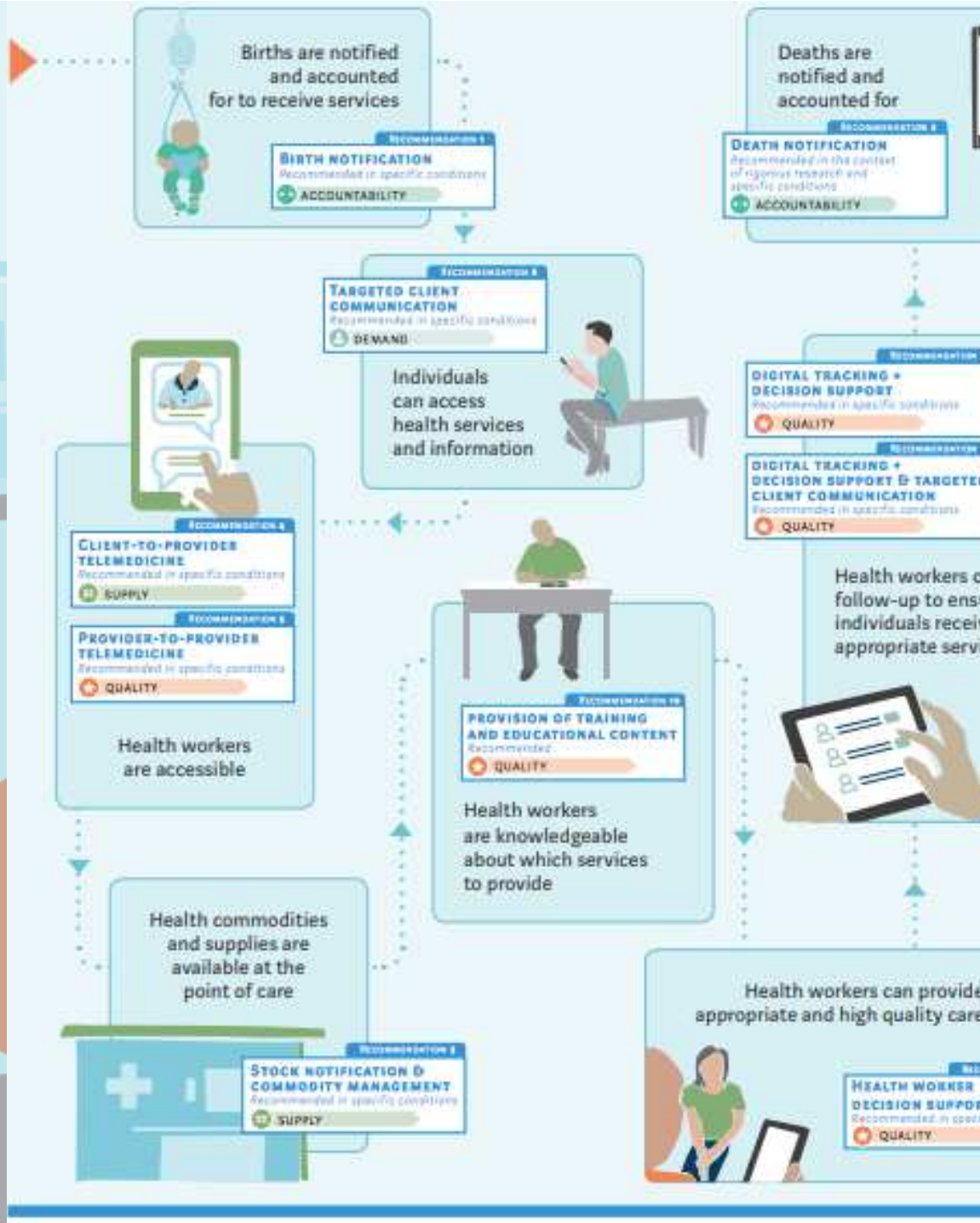
2010



Comunidades Conectadas y Social Media



WHO GUIDELINE RECOMMENDATIONS ON DIGITAL INTERVENTIONS FOR HEALTH SYSTEM STRENGTHENING



WHO GUIDELINE RECOMMENDATIONS ON DIGITAL INTERVENTIONS FOR HEALTH SYSTEM STRENGTHENING

